



## **40th SUNCOAST RACEWEEK**

### **Sailing Instructions Addendum 1**

Due to an unfavorable weather forecast, the following changes are made to the Sailing Instructions:

**Race #2 Saturday, April 14, 2018**

Add to Section 9, Marks and Courses, Appendix D & E below.

Use Appendix D & E in place of the published course.

Add to Section 9, Marks and Courses, the Start and Finish line will be between an orange Flag on the Race Committee Signal Boat and an inflatable mark. The location of the Start and Finish line is shown in Appendix D. Before the warning signal the course to be sailed will be displayed on a white board on the stern of Race Committee signal boat. Spinnaker and Racer/Cruiser Class will be in Black writing and Cruiser Class in Red Writing.

**Race #3 Sunday April 15, 2018**

The courses to be sailed will be the same as Race #2 above; however, should the weather conditions continue to deteriorate, there is a good chance that Race #3 may be cancelled. Such cancellation shall be announced no later than **0900 Saturday, April 14, 2018**.

**See Appendix D & E Belows**

**Posted on 4/11/2018 at 8:05 PM**

# 40th SUNCOAST RACEWEEK

## Appendix D Alternate Courses

The Starting Line and Finish Line will be in the vicinity of Marks "D/E".

All mark positions and distances are approximate. See latest NOAA and Notice to Mariners for exact locations.

### MARKS

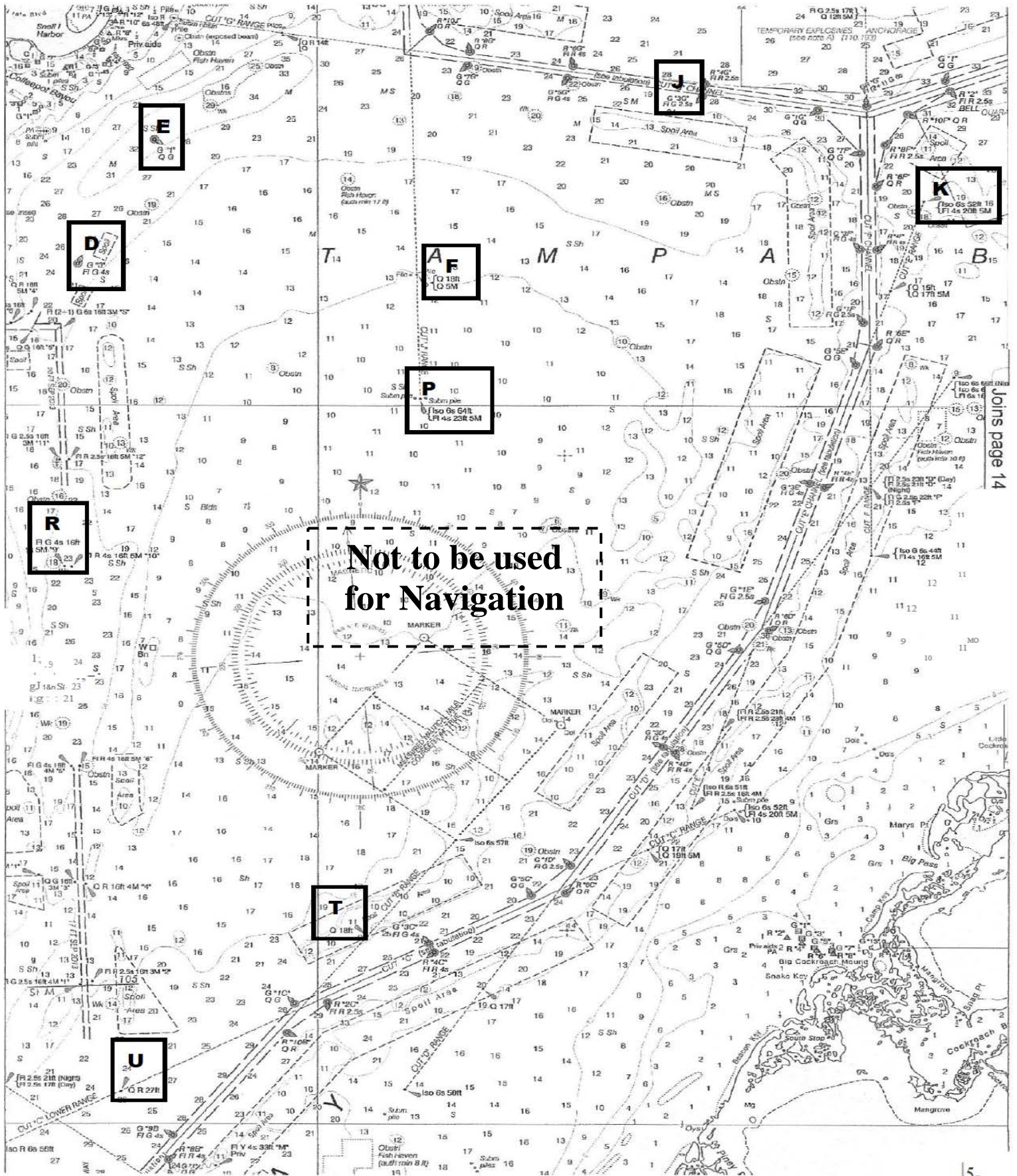
Mark "D"	G "3" Fl G 4s	1nm ESE of SPYC harbor entrance	27 46.0N	82 36.5W
Mark "E"	G "1" QG	1.2nm ENE of SPYC harbor entrance	27 46.8N	82 36.1W
Mark "F"	Q 10 ft Fl 4s 5M	Front Range Cut J Channel	27 45.9N	82 34.3W
Mark "J"	G "3G" Fl G 2.5s	Cut G Channel	27 47.1N	82 32.5W
Mark "K"	Iso 6s 52ft Fl 4s 20ft 5m	Back Range Cut E Channel	27 46.3N	82 31.0W
Mark "P"	Iso 6s 50ft Fl 4s 5m "A-B"	Back Range Cut J Channel	27 45.0N	82 34.3W
Mark "R"	Fl G4s 16ft 5M"9"	Pinellas Channel	27 43.9N	82 36.6W
Mark "T"	Q 18 ft	Front Range Cut B Channel	27 41.3N	82 34.7W
Mark "U"	QR 27 ft	Lower Range Cut C Channel	27 40.2N	82 36.3W

<u>COURSE</u>	<u>MARKS TO BE ROUNDED</u>	<u>SIDE TO BE ROUNDED ON</u>	<u>APPROX. DISTANCE</u>
#1	START-J-E-P-FINISH	PORT Except: P round to starboard	10.2NM
#2	START-K-E-P-FINISHES	PORT Except: P round to starboard	12.4NM
#3	START-F-K-E-P-FINISHES	PORT Except: P round to starboard	11.9NM
#4	START-F-K-E-P-K-FINISH	PORT	17.2NM
#5	START-F-K-E-T-P-FINISH	PORT	21.4NM
#6	START-F-J-E-T-FINISH	PORT	15.3NM
#7	START-F-K-T-R-FINISH	STDB	14.5NM
#8	START-F-K-R-FINISH	STDB	10.9NM
#9	START-F-T-FINISH	STDB	11.4NM
#10	START-F-T-U-FINISH	STDB	14.1NM
#11	START-K-T-U-FINISH	STDB	15.9NM
#12	START-F-P-T-U-D-F-FINISH	STDB	18.5NM
#13	START-F-P-T-U-D-F-D-F-FINISH	STDB	21.9NM
#14	START-K-T-U-D-F-FINISH	STDB	22.5NM
#15	START-F-P-T-U-R-P-R-FINISH	STDB	18.8NM
#16	START-K-T-U-R-P-R-FINISH	STDB	23.2NM
#17	START-F-T-U-R-FINISH	STDB	14.1N

See approximate mark locations on Chart below:

# Appendix E

## Chart for Suncoast Raceweek Alternate Courses Approximate Location of Marks



Joins page 14